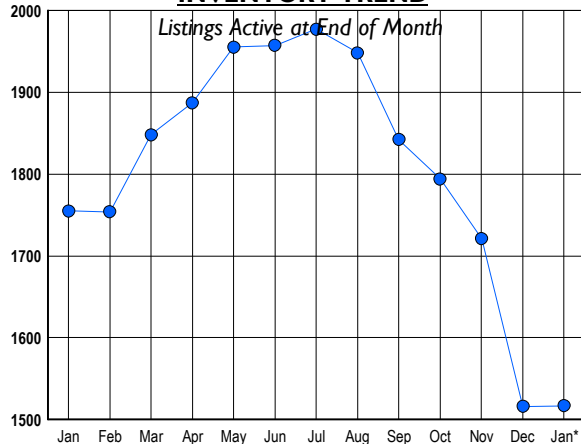


LISTINGS

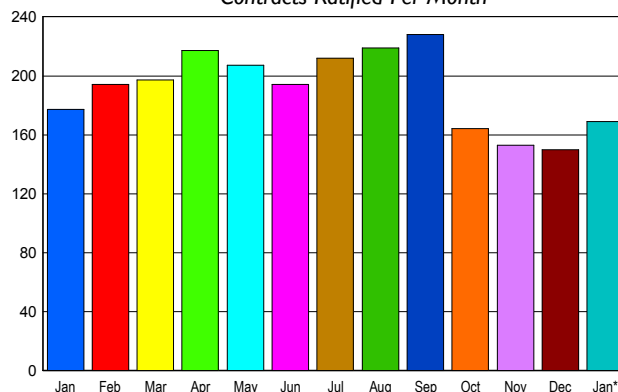
Prices Range	New This Month			Total Actives		
	2009	2008	% Change	2009	2008	% Change
0 - 149,999	21	2	950.0	91	11	727.3
150,000 - 199,999	35	17	105.9	200	88	127.3
200,000 - 299,999	111	131	-15.3	443	539	-17.8
300,000 - 399,999	65	110	-40.9	319	429	-25.6
400,000 - 499,999	42	81	-48.1	200	294	-32.0
500,000 - 599,999	16	43	-62.8	114	183	-37.7
600,000 - 699,999	11	23	-52.2	66	96	-31.3
700,000 - 799,999	2	7	-71.4	22	40	-45.0
800,000 - 899,999	2	8	-75.0	17	25	-32.0
900,000 - 999,999	1	5	-80.0	13	23	-43.5
1,000,000 - 1,249,999	0	1	-100.0	5	10	-50.0
1,250,000 - 1,499,999	1	0	100.0	10	5	100.0
1,500,000 +	2	1	100.0	17	12	41.7
TOTALS	309	429	-28.0	1517	1755	-13.6

INVENTORY TREND



SALES TREND

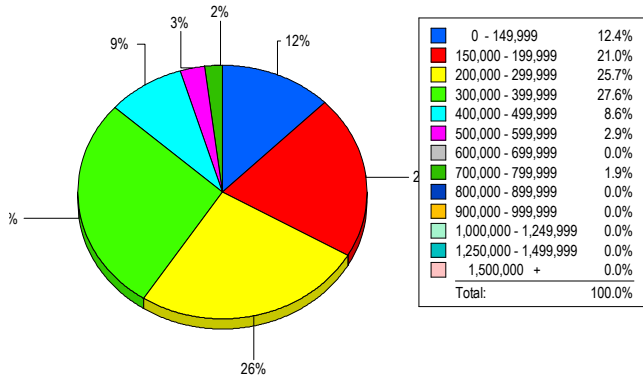
Contracts Ratified Per Month



CONTRACTS

Price Range	New This Month			Year-To-Date		
	2009	2008	% Change	2009	2008	% Change
0 - 149,999	14	3	366.7	14	3	366.7
150,000 - 199,999	30	16	87.5	30	16	87.5
200,000 - 299,999	68	63	7.9	68	63	7.9
300,000 - 399,999	37	41	-9.8	37	41	-9.8
400,000 - 499,999	17	30	-43.3	17	30	-43.3
500,000 - 599,999	1	12	-91.7	1	12	-91.7
600,000 - 699,999	1	7	-85.7	1	7	-85.7
700,000 - 799,999	1	2	-50.0	1	2	-50.0
800,000 - 899,999	0	0	0.0	0	0	0.0
900,000 - 999,999	0	2	-100.0	0	2	-100.0
1,000,000 - 1,249,999	0	1	-100.0	0	1	-100.0
1,250,000 - 1,499,999	0	0	0.0	0	0	0.0
1,500,000 +	0	0	0.0	0	0	0.0
TOTALS	169	177	-4.5	169	177	-4.5

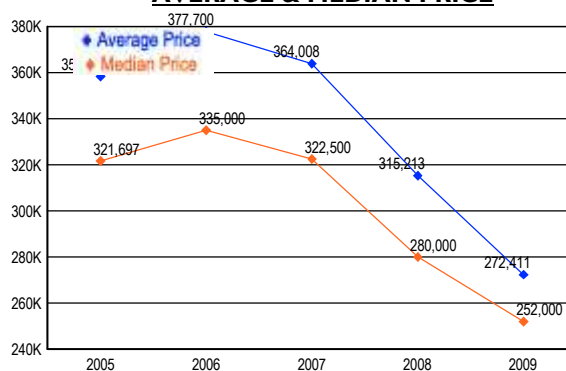
MARKET BY PRICE RANGE



SETTLEMENTS

Price Range	New This Month			Year-to-Date		
	2009	2008	% Change	2009	2008	% Change
0 - 149,999	13	2	550.0	13	2	550.0
150,000 - 199,999	22	8	175.0	22	8	175.0
200,000 - 299,999	27	38	-28.9	27	38	-28.9
300,000 - 399,999	29	22	31.8	29	22	31.8
400,000 - 499,999	9	16	-43.8	9	16	-43.8
500,000 - 599,999	3	13	-76.9	3	13	-76.9
600,000 - 699,999	0	3	-100.0	0	3	-100.0
700,000 - 799,999	2	3	-33.3	2	3	-33.3
800,000 - 899,999	0	0	0.0	0	0	0.0
900,000 - 999,999	0	0	0.0	0	0	0.0
1,000,000 - 1,249,999	0	0	0.0	0	0	0.0
1,250,000 - 1,499,999	0	1	-100.0	0	1	-100.0
1,500,000 +	0	0	0.0	0	0	0.0
TOTALS	105	106	-0.9	105	106	-0.9

AVERAGE & MEDIAN PRICE



DATA SOURCE: Metropolitan Regional Information Systems, Inc. (MRIS)

NOTES: Properties not listed through this Multiple Listing Service are not reflected. The term "sales" represents ratified purchase contracts. Current year information is preliminary and subject to revision. Current year-to-date contract information may not equal the sum of the monthly contract totals reported in